

Friends of Putney Library
and
Greenwich Leisure Limited (GLL)

Consultation on Putney Library



The Friends of Putney Library are consulting local people on the development of services at our Library so that they are relevant and responsive to the needs of the community. We will feed back the results to Greenwich Leisure Limited and Wandsworth Borough Council in our discussions with them.

We welcome your views so please contact us for further information on friendsofputneylibrary@gmail.com or see the document and online survey at <http://tiny.cc/PutneyLibrarySurvey> (for the library site) or <http://tiny.cc/SW15PutneyLibrarySurvey>



Consultation on Putney Library

This document sets out current library services, some of the changes Greenwich Leisure Limited (GLL) has already made, and some ideas for future developments. Appendix A lists existing library services.

Wandsworth Council put the Borough library service out to tender in 2012 and awarded the contract to GLL who took over the operation of the Library and Heritage Services in the Borough on the basis of no less of service and making savings of £800,000 per year.

Friends of Putney Library

The Friends of Putney Library (FoPL) were launched in October 2013 with the purpose of protecting, enhancing and promoting the role of Putney Library within the community. The Friends have run talks, discussions, arts events for children and adults, which have been well received.

FoPL have regular meetings with GLL and Wandsworth Borough Council (WBC), discussing and exchanging ideas for the development of library services in Putney and for greater community involvement. We have received a grant from Wandsworth Council and local councillors support our efforts to run various events at the Library in partnership with local groups.

Putney Library

Putney Library is an historic building with modern additions to adapt to the changing needs of library users.

Putney's first public library opened in 1887 at Tower House, further along Disraeli Road. Its popularity meant that a larger premises was needed, and so in 1898 the library's commissioners were offered a donation of £8000 (equivalent to almost £750,000 today) by local businessman George Newnes to finance the building of a new library. Newnes (1851-1910) was a newspaper editor, and twice served as a Liberal MP.

The new library opened in May 1899: it had separate ladies' and gentlemen's reading rooms, and a newspaper room. The librarian lived in a flat on the top floor.

At the outbreak of the Great War in 1914 one of the library's staff, William Mills, joined the army as a rifleman. Four years later (just weeks from the end of the war) he was killed whilst flying as a 2nd Lieutenant with the RAF in France.

During the Second World War the library itself played a role, as the front basement (now the music storeroom) was used as a civil defense post. The local police, fire

and Air Raid Precautions services were coordinated from here. The steel girders fitted to protect the room are still visible, as is the rather primitive ventilation equipment.

In the 1960s there was a first proposal to redevelop the library, but instead of the suggested new two-storey building two extensions were added to the entrance corridor, housing the children's and gramophone libraries. A second proposal followed in the mid-1990s, at which point Newnes's building was given Grade II listed status by English Heritage, and the present modern three-storey extension was constructed from 1996-98. A series of tours of Putney Library has proved popular.

Libraries in the Future

Libraries are constantly evolving to meet the changing needs and expectations of the local community, local businesses and visitors to the borough; also to deliver new services and to incorporate new and changing technologies. We would like to find out what the local community views are about the following:

a. The range of services people would like to see provided

Putney Library is already a centre for specialist collections as well as providing a good range of books, compact disks, films, and music scores. The library also runs various groups and puts on talks by authors. The large children's library has a number of regular activities. There are also computers, study areas and booths for listening to music.

b. The use of available space and type of facilities

We would like to find out people's opinions about the current use of library spaces and ideas for how it could be changed.

c. The development of the library as a cultural centre

Putney has a lively population with numerous different activities and events. The SW15 website now provides an excellent guide to events. Cultural activities include the Boat Race, choirs, concerts, music teaching, dance and theatre. There are also the annual 'Open Studios', Putney School of Art and Design (PSAD) courses and the Putney Society. Space in the library has always been hired out for community use. GLL has recently leased space to PSAD to deliver classes. Other organisations can hire this space when not in use by PSAD.

d. Information technology adequacy and its appropriateness for users

GLL have installed two new systems, the first is the Library Management System (giving improved catalogue and back room efficiencies) and the second is the cloud

base printing. This has meant:

- an improved online catalogue with more powerful searching facilities
- back office efficiencies which allow staff to focus on frontline services
- recently Installed a cloud based copier and printer solution allowing printing from home devices in the library

e. How the library should communicate with the public

FoPL would like to promote the library in the local community through wider dissemination of the “Bulletin” and publicity for events. We would like to focus particularly on young people who are the future users of the library and strengthen links with parents, schools and colleges.

f. Volunteering

There are a number of people who give their time in helping at Putney Library. GLL’s view is that volunteers should not undertake professional library work, but should provide added value services, for example help with learning how to use computers, offering language classes or helping with summer reading clubs. There are currently four volunteer roles for Children’s, Adults’, Heritage and Information Technology activities. Other suggestions are welcome.

g. Changes made so far

Since GLL have been running the library, they have made a number of changes. Including:

- Ensuring better access to newly published stock by withdrawal from the London Libraries Consortium
- New PCs with up-to-date Windows
- More robust and quicker systems for acquiring stock and obtaining reservations
- New self-service machines
- Increased opening hours
- A regular Knit and Natter session.
- Provided authors talks, as does the FoPL.
- The Children’s Library organises regular groups and events. FoPL have also provided some specific events such as badge making and a giant story book.
- Signage is being introduced to direct people to the right location of services and the notice board has been re-organised.
- Putney School of Art and Design have leased the meeting room and the Newnes Room to deliver lithography classes.

h. What other library services could be developed?

FoPL and GLL have developed some suggestions and we would like to know what people think, as well as finding out if there are other changes that could be made.

1. Some suggestions for developing Library services

There are many possibilities for developing services, some of which can be quite simple without additional cost.

- Opening on **Tuesdays** and closing earlier on some evenings to compensate
- **Increasing the range of clubs** in addition to Reading Groups such as for budding authors, poets, photographers, musicians e.g music practice room
- **Providing additional services** including by other outside organisations, businesses, voluntary and Council services
- **Widening the role of the Library as a local hub of information**, knowledge exchange and a focal point for the local community.
- A more **visible range of services for teenagers** and young people, connected to the adult library
- The **children's library to be** attractive to a wide age range of young people by providing stimulating activities to engage all age groups
- **Improved links with local primary and secondary schools** with homework clubs and study days
- Active liaison and **activities with local groups and organisations.**,
- **Develop 'For example Guides' to help research by topic, linking what is available in the library with other sources in Putney (e.g.PSAD), other libraries and online:** for instance, to find out about a particular piece of music, you can: download a composition, borrow recordings by different artists, find videos of performances, biographies of composers, scores, reference sources on-line and in the library. Other sources might be Westminster music library, historic collections at the British Library etc.
- Extent to which **items can be brought in** from other libraries, if not available in Putney: e.g British Library borrowing.

2. Some suggestions for use of space are:

- **Making the facilities more informal** such as having a healthy vending machine available, easy chairs and small meeting rooms for informal gatherings
- Re-organise the **'front of house'** arrangement to attract outsiders, by having a board **listing all services and facilities** and a key to where they are.
- **One rather than two service desks** so the public to know where to go. It would also be more welcoming to see a person on entering.
- **Exhibition space** is very much in demand, how could it be extended?
- **Other organisations** might occupy parts of the Library.
- The large window space should be used for **interesting displays** to attract people in.

3. Ideas for how the library could develop as a cultural centre

- Provide space for local music, theatre and cultural activities groups with a **rotating range of displays**
- Expand and increase **the use of special collections**
- Compile a **list of local societies**/study groups and contact points
- Meetings with **local schools**: what can Putney Library do for them, how can it be of more interest to their students
- Meetings with **local businesses and freelancers**: facilities they would find useful, plus networking
- Meetings with **local groups** (photography, artists, music, history etc) to share ideas on local cultural development
- Consider an **annual Putney cultural forum** at the library, similar to the Discover Culture in Putney event on 11th February 2015
- Provide opportunities for **talks/classes**: self-publishing, story-telling, etc
- Replicate Balham's ideas for '**why I love my library**' & 'my favourite books'

4. Some suggestions for improving IT

- Better **printing facilities**, projection facilities, large television screen, e-books
- **Provide instructions/courses on how to use** equipment and available software, both online and in print.
- The library **to improve the publicity for the types of information databases** available and promote ease of use
- **Provide instructions/Training** on the library website and management system available on the internet
- **Disperse groups of IT stations** around the building to enable project work
- **Clubs** could use the meeting room to reduce disturbance, subject to agreement by PSAD
- **Wider use of FREEGAL** for on line music
- Make use of **Massive Open Online Course (MOOC; /mu:k/)** is an online course aimed at unlimited participation and open access via the web.
- **Digital studio facilities**: design facilities, 3D printers and other technology of interest to teenagers/20 year olds but too expensive for them to buy: e.g. the Woolwich e-table, gaming suites, design programmes & large screen
- **Basic computer and internet training** to increase access to online information services e.g. for silver surfers
- **Talks/classes**: Raspberry Pi, digital design, build your own web-site, security on the net, how to design a video game

5. **Suggestions on how the library should communicate with the public**

- Improve the electronic monthly '**Bulletin**' to promote activities and make it more stimulating possibly with an editorial, short articles and events presented in a more compact way.
- Expand a **database of e-mail addresses** for publicising events
- Develop **ways of communicating with the public**. E.g. use of the Putney Forum, links with schools and through the children's library with parents
- Invite **local groups to contribute** to the bulletin, so it becomes like a newsletter
- Make the **website** more accessible and useful for people
- Provide details of **stock added** each month
- Feature what people in Putney are **reading**
- Provide a facility for readers to **discuss/rate/share comments on-line** on books read – a Putney Library e-forum?
- Develop **electronic voting** on books read and on library services
- **Proposed changes** to Putney Library services should be well publicised

6. **Feedback on changes made so far**

- In addition to the Knit and Natter and Reading groups, are there other groups you would like to see started?
- Do the author's talks work well and would you like to see more?
- Do the regular children's activities provide stimulation and interest and what kind of events would you like provided?

7. **What we plan to do**

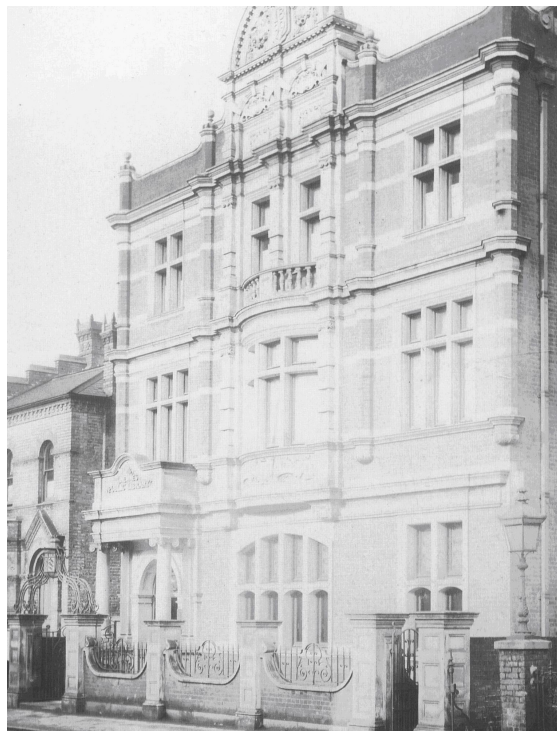
- a. Use a mixture of different ways to find out people's views:
- b. Carry out a short survey to include library users, groups and the wider community. This will be both paper based and on the Putney Library and SW15 websites
- c. Discussion meetings with local groups.

We will analyse the results and provide feed back on the outcome of the consultation. This will inform discussions about future service developments.

Conclusion

The Friends of Putney Library and Greenwich Leisure Limited are keen to hear from local people, groups and organisations about the library and what it could provide to make sure that it remains a central part of Putney life. We are happy to come and talk to groups, schools, organisations to hear your views.

To contact us please FoPL on friendsofputneylibrary@gmail.com or fill in the slip below which can be left at Putney Library.



Putney Library 1906

.....
Please fill in your details if you have a request or wish to make comments on the consultation to Friends of Putney Library

Name.....Telephone No.....

Putney Library Services

Adult Library stock	Children's Library stock
Fiction – <ul style="list-style-type: none"> • General • Crime • Romance • Sci-Fi • Horror • LGBT • Black writers • Graphic novels • Large print • Bestsellers • Novelties+ <p>Talking books Large Print ebooks – via Overdrive and Askews</p>	Fiction <ul style="list-style-type: none"> • Board books • Picture books • Stories for younger children • Stories – 8+ • Teenage • Teenage+ • Large format <p>Both Adult and Children's stock Stories in community languages and dual language Audio books DVDs</p>
Adult non fiction <ul style="list-style-type: none"> • General in Dewey Classification order • Local history • Reference 	Non fiction <ul style="list-style-type: none"> • General in Dewey classification order • Reference section • Information for parents • Teacher/parents shelf • First facts
Adult activities Author visits Local history events and as part of Heritage Festival Reading group – monthly Knit & Natter group English conversation group (Italian – now finished??) Volunteering to support library activities	Children's activities Baby rhyme time (aged 0-5) – Mondays 10am and 2.30pm Dads' rhyme time (aged 0-5) 1 st Saturday in month 10.30am Story time (aged 0-5) – Thursday 2.30pm Messy Morning – every Wednesday 10.30 to 11.30am Homework support – Wednesday and Thursday 4 - 7pm Bookstart Summer Reading Challenge Volunteers to support library activities Duke of Edinburgh Award School holiday activities

Music Library / audio visual services

- CDs
- DVDs
- Scores and performance sets (vocal / orchestral)
- GLASS collections (as part of – CD and LP: Rachmaninoff, Prokofiev, jazz artists LEE-LZ, Scottish folk, film and TV soundtracks)

Reserve collection in Basement

- Oversize stock
- Part of MCS on European History and particularly on two World Wars

Facilities and other services

- People's Network PCs – in Adult and Children's Libraries
- Library shop - local history items from local societies and cards from local artists
- Art gallery space - Exhibitions by local artists and local schools and PSAD
- Room hire - Hall including kitchen one toilet and one disabled toilet
- Photocopying and printing
- Residents' visitor + Trades' parking permits
- Freedom pass online renewals
- Battery recycling
- Monthly MP surgery
- Weekly councillor's surgery
- Children's toilet and baby changing
- Adult/disabled toilet facilities

Putney School of Art and Design

PSAD has recently taken a lease on the meeting room and the adjacent Newnes Room to run lithography classes and will also let it out for other activities.

Early Children's Books Collection

The Henty collection (since 1997 been housed in Putney Library) with the Collection of Early Children's Books. It comprises 233 copies of works by George Alfred Henty (1832-1902), the writer of adventure stories, in 278 volumes. It is the best Henty collection anywhere, lacking only one first edition, and for the most part in publishers' cloth in fine condition. It includes 79 bequeathed by his widow Elizabeth in 1927, and presentation copies. Access is limited to the librarian's availability.